

Tel Abel Beth Maacah Expedition 2022



VOLUNTEER GUIDE

Welcome to the tenth season of archaeological excavations at biblical Abel Beth Maacah! We are anticipating a rewarding summer with interesting finds and great friendships and above all, good health! We welcome you to our project. The following information will orient you to the upcoming excavations.

Sponsors and Staff

The academic auspices of the excavation are the Institute of Archaeology of the Hebrew University of Jerusalem and Azusa Pacific University in Los Angeles. The dig is supported by many generous individuals who have made our excavation project possible (please read about them on our website). The project is also funded by an Israel Science Foundation Grant (ISF) awarded to Prof. Naama Yahalom-Mack, one of the directors.

The project is directed by Prof. Bob Mullins (Azusa Pacific University), Prof. Naama Yahalom-Mack and Dr. Nava Panitz-Cohen (Institute of Archaeology, Hebrew University of Jerusalem). Prof. Amihai Mazar of the Hebrew University of Jerusalem and Prof. Lawson Younger of Trinity International University are on the project's advisory board. The staff comprises professional archaeologists and university professors from Azusa Pacific University, the Hebrew University of Jerusalem, Asbury Theological Seminary, Trinity International University, Indiana Wesleyan University, Cornell University, Trinity Southwest University, the Pillar Seminary, William Jessup University, and the University of Tennessee.

General Information

Dates and schedule: This season's excavations at Abel Beth Maacah (fondly nicknamed, ABM) will take place from **Sunday June 26 – Friday July 22, 2022**. The **arrival day** at the kibbutz is always on the Sunday afternoon of the week you start digging. We excavate five days (Monday

through Friday). Saturday and Sunday are free. **Check-out** is by **10:00 am** on the Sunday at the end of your stay, except for the final fourth week, when departure is by 10:00 am on Friday.

Period of participation: Every team member must register for a *minimum* of two weeks, though exceptions are possible. Based on this registration, we reserve rooms in the kibbutz and plan our excavation strategy. *Please notify us as soon as possible if there are any changes in the dates you plan to be with us.*

Field conditions: An archaeological excavation requires physical labor (sometimes strenuous) in dusty and hot conditions. We work under shade cloths so no one is exposed to direct sunlight for long periods; however, it can still get warm. This is why we begin early in the morning and quit after it starts getting hot. We also try to accommodate team members with physical limitations; for example, if you have a weak back we are not going to force you to push wheelbarrows. There is little way to predict how one may adapt to field conditions, but if you are in good health, enjoy the outdoors, can lift buckets of dirt (even half-buckets if strength is an issue), can live with chemical toilets, and don't mind being dusty and dirty for a few hours then you should be fine.

Cost: The basic cost for a unit with kitchenette, toilet and shower that accommodates 3-4 people is **\$595** per week (7 nights) for **full room and board** for the first three weeks and **\$425** for the fourth and final week (5 nights). Every extra night is **\$85**. The weekly cost includes transportation to and from the tell each working day. All other transportation arrangements and costs must be made by the individual team member.

A few **double rooms** (two in a room) are available, though we recommend early registration in order to ensure availability. The cost for a double room is **\$230 per night** (\$1750 per 7-night week for Weeks 1-3 and \$1250 for the final 5-nights of Week 4.

Returning team members are entitled to a discount: the cost will be **\$525** per week for the first three weeks and **\$375** for the final, fourth week of five nights. For double rooms, the returning team member discount is \$1575 for Weeks 1-e and \$1125 for Week 4.

Weeks	1-4	1+2/2+3	1+2+3	2+3+4	3+4
Total cost	2210	1190	1785	1615	1020
Discounted Returnees Cost	1940	1050	1575	1375	890
Deposit	1105	595	892	807	510
Balance	1105	595	893	808	510
Discounted Balance for Returnees	835	455	683	568	380



Kibbutz Kfar Szold



The grounds and lodging units at Kibbutz Kfar Szold

Accommodations: The expedition is housed at Kibbutz Kfar Szold, ca. 12 km/7 mi southeast of the tel at the northern end of the beautiful Huleh Valley. From the kibbutz you have a marvelous view of the Golan Heights to the east, the Naftali Hills to the west, and majestic Mt. Hermon to the northeast. Summer sunsets can be breathtaking! Each air-conditioned unit accommodates 3-4 people and includes a kitchenette, shower, and bathroom. Lawns and porches adjoin the rooms. Free wireless internet is available in the rooms. For more information, visit the kibbutz website www.bakfar.co.il.

Please note that you do not need to make separate reservations with the kibbutz. We handle that for you. The meal schedule on the website applies to other lodgers and not to the archaeological team. We will provide you with a detailed schedule when you arrive.

- Weekends are included in the weekly price, whether or not you choose to stay on the kibbutz.
- Your room will be available from the Sunday of the week of your arrival. If you wish to come before this day (or stay additional days), please let us know as soon as possible so we can make arrangements. *There is no refund for weekends or other days spent away from the*

kibbutz. Any extra night beyond the normal seven-day week will cost an additional \$85 (or \$250 for a double room; \$207 at the discounted returnee rate).

- The rooms are available from 2:00 pm on the day of your arrival and you must vacate the rooms by 10:00 am on the Sunday morning of your departure (or by 10:00 am on the Friday morning of the final week).
- For the most part, you will be in the same room during your stay; however, there is a chance that we may need to move you into a different room for part of the time. Please accept this change with understanding.

Due to the COVID-19 pandemic and the constantly changing protocols, we are allowing all applicants to hold off on their deposits until **JUNE 10** or until you receive a notification from us that it is fine to make your deposit. This will avoid the hassle of refunding your deposit if the Ministry of Health should make it impossible for us to dig this summer. In the email, you will receive a link to pay your deposit and balance through a secure server at Azusa Pacific University (see table above). You may use a credit card (Visa, MasterCard or Discover Card) to pay at https://formstack.apu.edu/forms/abel_beth_maacah_payment or by making out the check to “Azusa Pacific University” and writing “Abel Beth Maacah Dig” on the memo line. Send your check to the following address:

Prof. Robert Mullins
Department of Biblical and Religious Studies
Azusa Pacific University
701 E. Foothill Blvd.
Azusa, CA 91702-7000

The **balance** can be paid online using the same link above or by personal check to the above address. Most people pay their balance online before they depart but you can pay at any time through the day of your arrival at the kibbutz. If you want to pay in cash, the balance can be paid in U.S. dollars or the equivalent amount in *shekels* (the local currency) at the current exchange rate. *Again - the balance is due no later than your day of arrival at the kibbutz.* More details on the payment and refund policy are on Page 3 of the registration form.

Refund policy: If for any reason the archaeological project cancels the dig, you will get a *full refund*. If you do not show up on the dates for which you registered, or if you decide to leave after you have arrived, we regret to inform you that we cannot issue a refund. This is because we remain liable to the kibbutz for the *full* cost of your room and board. If you cancel your participation in advance, we can issue you a refund as follows:

Date of cancellation	Refund amount
June 10-June 25	25%
After June 25	None

IMPORTANT: If your cancellation is health-related and due directly to the Coronavirus, we will issue you a full refund; however, we will require an official medical affidavit in order to do so.

IMPORTANT: When you arrive at the kibbutz, give your passport and the small entry card from passport control to Shiri in the B&B office, so she can photocopy them as required by law. She will return both as soon as she is done. This verification is to ensure that you will not be charged V.A.T. (Value Added Tax) as a tourist.

- **Food.** You will be provided with a hearty breakfast on the tell, a hot meat meal in the dining room for lunch, and a hot dairy or meat supper in the Bakfar dining room. Coffee and tea are available in your rooms, as well as bread and jam or cookies for an early morning ‘snack’ before departing to the tel. Food on the kibbutz is kosher. **If you have special food needs** (vegetarian, gluten-free, etc.), please let us know in advance on the registration form or by email. We will do our best to accommodate your needs. Lunch is served Sunday through Thursday in the dining room directly upon returning from the tell). Saturday and Sunday breakfast is in the dining room from 8:00-10:00. Weekend lunches and dinners will be announced.
- **Room and Bedding.** The kibbutz provides each person with a bed, mattress, sheets, pillow, blanket, and towels. The room is cleaned twice weekly and the bedding changed once per week. Towels are changed twice weekly but you can go to the office and get clean towels daily if you wish. The kitchenette is equipped with a refrigerator, electric kettle, microwave, cups, plates, and utensils.
- **Laundry.** Most people do their laundry by hand. You can purchase laundry soap at the kibbutz convenience store (Kolbo). Each room has laundry lines to hang clothes to dry, which they do quickly in the heat.
- **Infirmery.** There is a medical clinic on the kibbutz that can handle a minor emergency. If a major illness occurs, we will transport the team member to a nearby clinic or hospital in nearby Kiryat Shemona or Safed.
- **Medical and Accident Insurance.** **You must declare that your physician has pronounced you physically and mentally able to participate in the rigors of an archaeological excavation. It is imperative that each person has medical insurance that is valid upon arrival in Israel or else we cannot allow you to excavate.** In many cases, the person pays for the treatment up front and reimbursed back home. Verify this with your insurance company. You must also show that you are **covered for accidents** (such as a fall, car accident, etc.). Bear in mind that some medical insurance policies do not cover accidents. *We recommend* that you purchase **travel insurance** in addition to your regular medical insurance, which will cover such things as flight delays, cancellation, trip interruption, lost luggage, emergency medical evacuation, accidents and dental emergencies while traveling. Some plans will allow you to opt out of medical insurance if you have it, or if not, you can purchase a travel plan with minimal coverage. Go to a site like Squaremouth.com at <https://www.squaremouth.com> to compare plans. If you purchased your flight with Visa or another credit card, some travel items may already be covered. **Be aware that travel insurance may not cover illness due to COVID-19.**
- **Recreation.** Free swimming facilities for the volunteers are available, as are sports facilities. The region around the kibbutz is replete with natural springs, interesting tourist attractions, such as rafting down the nearby Jordan River, nature sites to visit, as well as shopping and restaurants (including a great burger place and a McDonalds!). Further information and maps are available in the B & B office.

- Convenience store (Kolbo). A small but well-stocked grocery store is located on the kibbutz grounds. Opening hours will be posted but it is generally open Sunday-Thursday (7 am to 7 pm) and Friday (7 am – 3 pm).
- Public bus and taxis. A regional bus enters the kibbutz a few times a day and will take you to Kiryat Shemona. You can find out the times from the kibbutz B & B office. Taxis to town are not that expensive (around \$15), especially when shared by others. The kibbutz office will help you order a taxi if you would like.
- Mail. If you would like to have mail sent to the kibbutz while you are there, use this address. Keep in mind that it often takes 10-14 days for mail to reach Israel from the U.S.

Your Name
 "BAKFAR" Country Lodging
 Kibbutz Kefar Szold
 Route 918, Upper Galilee
 Israel

Preparing for your trip

- Work clothing. Work clothes should be sturdy, light in weight and color, and easy to wash. Since the sun is intense, you may need to vary sleeve and pant lengths until you get into condition. Remember that loose clothing is more comfortable than close fitting, and that synthetic fibers tend to be hot. We do not permit excavating without a shirt for men or in a bathing suit for women. Even though we work under shade cloths, sunrays still penetrate and can badly burn exposed skin, so a high SPF sunscreen (50+) is a must. A good lightweight pair of work gloves will protect your hands. We recommend garden gloves with a coating of nitrile (a rubber-like film) on the palms and fingers.
- Work shoes. Sturdy and comfortable shoes are required. The soles must be thick enough to provide protection from the rocks and an occasional curious scorpion. We discourage sneakers. Sandals are not allowed in the field – only closed shoes!
- Sun hat. A broad brim hat made from light breathable cotton is best.
- Casual clothing. For after work and on weekends. Dress in Israel tends to be informal. Don't forget your swim suit!
- Dress code for holy places. It is essential that you dress modestly when visiting holy places in Jerusalem and churches around the Sea of Galilee. T-shirts and shorts below the knees are acceptable. However, if you are wearing a tank top or shorts above the knees, some sort of covering is required. A shawl and wrap-around skirt is advisable for women and a button shirt and loose slacks that can be easily pulled over the shorts is suggested for men. Cargo pants with legs that can be unzipped and zipped back on when necessary is convenient for men and women.
- Canteen. Although we provide you with cold water in the field, you cannot drink from the common tank. Each person must bring their own canteen or water bottle and fill it with the cold water we provide. You will also find a canteen useful for field trips and on weekends. An insulated water bottle holder is a good idea as well.
- Electrical plug adapter from USA flat pin style to Middle East/Europe round pin style. Israel uses two-prong plugs in their wall sockets, common to the Middle East and southern Europe. <https://www.amazon.com/Plug-Adapter-Flat-Europe-Round/dp/B001ISUCME>. Make sure

your electronics are 110/220 volts. If not, then you will need a 110V to 220V transformer as well, though most cellphones, tablets, computers, cameras, and other electronic equipment will adjust automatically to the differences in voltage. If your laptop has a three-prong plug, you can buy a USA three-prong receptacle in back and two Middle Eastern type prongs in front like the one shown here. https://www.bhphotovideo.com/c/product/666355-REG/Watson_APG_USA_E_Adapter_Plug_USA_to.html. You can also buy them quite easily in Israel if you forget to buy one at home ahead of time.

Highly Recommended:

Toiletry items
Medicine, prescription and other
EpiPen (Epinephrine autoinjector, if you need it for anaphylaxis)
Gatorade or another hydrating powder to mix into water
Sunglasses
Swim suit
Towel and flip-flops (though towels are provided at the kibbutz)
Sunscreen of SPF50 or higher
Insect repellent
Clothesline and clothes pins
Liquid detergent in a plastic bottle (Handwashing soap for clothes available in the kibbutz store)
Flashlight
Alarm Clock
Reading material
Modest clothing (a wrap skirt and shawl for women and long pants for men) for day trips to churches, synagogues, mosques which require modest dress to enter them.
Camera
Personal computer/tablet. Free Wi-Fi is available on the kibbutz and also available – also free – at many coffee shops and public places; even on some buses!

Tools. Archaeological handpicks and trowels are on site, so there is no need to buy your own; however, avid archaeology students often like to come with their own “kits”. A good resource is **Forestry Suppliers** at 1-800-647-5368 or <http://www.forestry-suppliers.com>. For Marshalltown pointed trowels, No. 45/4 is the best size (a “4 inch” blade). You can also buy them in a few hardware stores, but they becoming harder to get these days. Avoid the cheap off-brands. A 45/4 pointing trowel (Stock number 53685 with a 4 x 2” blade) sells for around \$15. The 45/5 with a 5” blade is also good, but not as efficient as the shorter blades. You can also buy the high quality Ingalls Co. archaeological handpicks through Forestry Suppliers for \$60 (Stock number 33454). We recommend the wider “Surveyor” model, though the slightly narrower “Detailer” is good as well. Mark your personal trowel or handpick with your name, initials, or some other identifier so you can easily find it in the dirt or if it gets accidentally picked up by someone else.

Planning your trip:

1. In general, the sooner you book plane reservations the cheaper the cost.
2. It is a good idea to buy travel insurance that will refund you the cost of your plane ticket if you need to cancel the dig for any reason. Most also include accident insurance.
3. Develop and use a personalized travel-packing list. Keep your list up-to-date, handy and detailed. Store your list in your luggage or with your travel documents.
4. Bring an extra passport size photo, as well as a photocopy of the information and picture page of your passport. It is also a good idea to scan your passport, birth certificate, airline tickets or voucher, prescription information, and any other information and e-mail them to yourself in case of loss or theft.
5. Get the local phone number for your airline so you can contact them easily if you must. Bring Nava's phone number with you in case you need to contact her for any reason, as well as the phone numbers and other information for Kibbutz Kfar Szold.
6. Place of sheet of paper with your Israel and U.S. contact information inside each piece of checked luggage on top of your clothes. If your luggage misconnects this could help. Even if the luggage tag gets lost, airline personnel will be able to identify and contact you. It is also a good idea to remove anyone else's ID tags on your luggage, since one thing Israeli security personnel look for is whether or not the luggage is clearly identified as yours.
7. It is a good idea to leave any non-essential cards, credit or otherwise, at home. If you don't plan to rent a car, you can leave your driver's license at home, though some like to have an extra photo ID with them.
8. Pack old underwear, socks, clothes, etc. and throw them away at the end of the dig. This leaves room for souvenirs.
9. In your carry-on bag, be sure to include your needed prescriptions, eyeglasses, contact solution that meets the 3 oz airline limit for liquid containers, an extra shirt and a change of underwear and socks, limited cosmetics and toiletries in case you experience a delay or your luggage gets misplaced. **We strongly recommend that you pack your dig shoes and a set of dig clothes in your carry-on so you can go right into the field even if your luggage is lost for the first day or so.** If for any reason your luggage does not arrive at the airport, there is a lost luggage counter nearby the carousels. The airport is good about getting lost luggage to you wherever you are staying, so be sure you have the name of the kibbutz with you when you disembark from the plane. They will deliver it, usually within a day or two, right to the kibbutz office.
10. If you are traveling with someone, cross-pack with your partner. It reduces the odds that a lost or delayed bag will disrupt your trip.
11. Carry a folded-up bag with zippers, handles and luggage tag and pack it with your luggage. If you find that you do not have enough room to bring back souvenirs with one bag, you will have the spare.
12. A daypack is handy for bringing items to the tel with you every day, and a great catchall for guidebooks, water bottle, souvenirs, etc. while traveling on the field trips.
13. Handy items to bring with you on the trip include hand sanitizer, wet wipes, and Kleenex.
14. Place your shoes in the last bin you put through airport security. If you have to take off belts, remove change from your pockets or put through anything, you will always scoop them up if they go with your shoes, since one never walks away without their footwear.

Cellphones: Check with your cellphone provider about using your phone in Israel. Verizon phones will work in Israel, but you will pay quite a bit for phone calls. Still, it can be good for emergencies. **If you subscribe to T-Mobile, you will have free 2G internet access – slow but functional.** This allows you to send free text messages and even call free using FaceTime or WhatsApp. Phone calls are around 20 cents per minute. You can purchase a plan with a local Israeli carrier like Cellcom, Orange or Golan Telecom, but the cost is hardly worth it if you are only in Israel a short time. For those who are staying longer and want a local Israeli carrier, make sure that your phone has SIM card capability and is unlocked. I have been told that the SIM port on Verizon phones is already unlocked, though you may want to confirm this with Verizon. The kibbutz is wireless enabled, and there are many other places in Israel where you will be able to log onto hotspots with your smartphone or tablet to check email or send text messages.

Arrival in Israel

Arrival at Ben Gurion International Airport (TLV): It is generally recommended that you **not arrive on Friday afternoon** when things begin to shut down for the Sabbath (usually by 1:00 PM), **or on Saturday when most everything is closed.** If you land at such a time, taxis are available at a higher “Shabbat rate”. Private taxis are expensive, but shared taxis (“sherut”) that seat 10 people are available for a lower price. The least expensive way to travel is by bus or train.

Plan to arrive at least one day before you are scheduled to begin, since the trip from the airport (or from Tel Aviv and Jerusalem) to the kibbutz can take almost 4 hours, depending when you arrive and your mode of travel to the kibbutz.

Passport: You must have a valid passport **whose expiration date is at least 3 months after the time you plan leave the country.** Each team member must make his/her own arrangements as far as visas are concerned. U.S. and Canadian citizens receive a **free tourist visa** upon arrival that is valid for 3 months. While many of you are students in your home country, you are entering Israel as *tourists* (B2 visa); not as students (B1 visa). Other nationalities should consult the Israeli consulate in their region. In 2015, Israeli officials started issuing tourist visas on a separate entry card that you insert into your passport, rather than as a stamp in the passport itself, which you then surrender to passport control upon leaving the country.

Security: When you arrive in Israel you will go through passport control. In some cases, you might be questioned as to the purpose of your visit to Israel. (Such questioning about your travel intentions may also take place before you board the plane on the way to Israel.) We recommend that you phrase your response something like this: “I will be participating on an archaeological excavation at Tel Abel Beth Maacah near Metulla (or Kiryat Shemona), with Dr. Nava Panitz-Cohen and Prof. Naama Yahalom-Mack of the Hebrew University of Jerusalem.” **NEVER use the words, “I am going to work or volunteer or study”.** It may seem silly, but in the past, we have encountered situations where the security officials took this to mean the need for a special work visa or student visa. While it all works out in the end, it is a pity to go through any hassle. If there is any trouble at all, ask the official to call Nava (NAH-vah). Relevant phone numbers are listed below. Remember, it is forbidden for tourists visiting Israel to go into the West Bank or

Gaza from Israel. If you plan to visit Jordan or Egypt after the dig, you do not need to go into detail about this with the security people at the airport. It will only raise red flags for them.

Money: Upon your arrival at Ben Gurion International Airport, we suggest that you change some money into shekels. Banks for exchange are located in the arrivals hall. ATM machines are also available at the airport and throughout Israel. Be sure to get a PIN number to use with your card if you do not already have one, and make sure it will work in Israel. (NOTE: *letter codes are not used in Israel*, so if the PIN for your card is a letter sequence, memorize the equivalent numerical sequence.) Notify your bank before you leave and tell them which days you will be abroad, so you do not find your debit or credit card declined at the ATM over the suspicion that there might be fraudulent use of your card.

Car rental: If you plan to rent a car at the airport, go up one level from the arrivals hall to where the car rental desks are located. Be prepared to give them your passport, your blue entry card, and a credit card as a security deposit. The car pick-up and drop-off area is in the parking garage opposite Terminal 3.

Ben Gurion Airport VIP Service: Anyone who might want to use the express VIP service upon arrival at Ben Gurion Airport, see <http://israel-concierge.com/airport-vip-service>

Getting to Jerusalem

We encourage volunteers to arrive a few days early for sightseeing in Israel. If you are short on time, at the very least, come to Jerusalem a couple of days early to tour the Old City. It is well worth the visit. If you arrive early, you can more easily make use of the train or bus to get to Jerusalem. If you are arriving on the day of departure to the kibbutz, then these options will take too long. Instead, we encourage you to make use of the Nesher Airport Shuttle.

Train: A quick way to get to Jerusalem is by rail <https://www.rail.co.il/en>. To get to the train, exit the arrival hall and turn left or right. Signs point the way. You will want to get off at the **Yitzhak Navon** station. This is the eastern terminus of the Tel Aviv-Jerusalem line. It is located opposite the Central Bus Station and the city's light rail system which will take you to the heart of Jerusalem and to the Old City.

Bus: Another option to Jerusalem is the **#485 bus** outside Terminal 3 at Ben Gurion Airport to a location one block away from the Central Bus Station. It departs every hour on the hour 24 hours a day from Saturday evening to Friday afternoon (not on Shabbat). The cost is **16 NIS** and you **pay the driver directly**. In Jerusalem, the bus stop is located one block east of the Central Bus Station on the corner of Jaffa Road and Moriah Street. For more information, go to and https://moovitapp.com/index/en/public_transit-line-485-Israel-1-17-548048-0. You can also find information about the #485 bus here: <https://abrahamtours.com/theme/airport-transfers/>

Airport Shuttle: You may take a shared airport taxi from a company called “**Nesher**”. Their station is well marked and directly outside the arrival terminal. The cost varies based on the

shekel to dollar rate, but it is around **64 shekels (about \$19; no tip necessary)** and they will drop you off at any address in Jerusalem where you may stay until the end of the Sabbath. For more information, go to <http://www.neshertours.co.il/en/taxis-from-ben-gurion>. Their contact number is 072-264-6059.

Accommodations in Jerusalem

The easiest (and cheapest) place to get accommodations is in the Old City of Jerusalem. If you are coming by Nesher shuttle, tell the driver to let you off at Jaffa Gate. The best bet is to look up accommodations on the internet. Consider making reservations at one of the Old City youth hostels or hotels before you arrive. Most of them are reasonably priced, clean and safe. Look for **TripAdvisor** recommendations (download the free app) or contact the dig staff for advice.

Abraham Hostels: Highly recommended is the Abraham Hostels in Jerusalem, Tel Aviv, and Nazareth. To make online reservations and find out other information, see their website at <https://abrahamhostels.com/>

Here is a list of hotels and hospices inside the Old City of Jerusalem or within walking distance of the Old City. Many have websites. To call from the US, dial 011-972-2 + number

Hotel/hostel	Phone	Fax
Gloria Hotel (Old City, Jaffa Gate)	628-2431	628-2401
Knight's Palace (Old City, New Gate)	628-2537	628-2401
Christ Church (Old City, Jaffa Gate)	627-7727	628-2999
Lutheran Hospice (Old City, Jaffa Gate)	628-2120	628-5107
Maronite Hospice (Old City, Jaffa Gate)	628-2158	627-2821
Casa Nova (Old City, New Gate)	627-1441	626-4370
Greek Catholic Patriarchate (Old City)	628-2023	628-6652
Notre Dame (across from New Gate)	627-9133	627-9148
St. Andrew's Hospice (about 10 min walk)	673-2401	673-1711
St. George's Hospice (East Jerusalem)	628-3302	628-2253
East Jerusalem YMCA	628-6888	627-6301
West Jerusalem YMCA	569-2692	623-5192

How to get to the kibbutz from Ben Gurion Airport

By Public Bus: You can get to Kiryat Shemona (also spelled "Shmona" on the Egged website) by bus from the Central Bus Station in Tel Aviv or in Jerusalem. For the schedule, please consult the Egged website (www.egged.co.il) and click the "English" link before you arrive in Israel, since schedules can change in the summer.

Via Jerusalem: Go to the **Jerusalem Central Bus Station** (also called the "**Egged Bus Station**", the name of the official bus company). Allow yourself 10-15 minutes to get inside the bus station, as the security check line can be long. Luggage might be screened. Take the **#963** bus to **Kiryat Shemona**. This ride costs about **60 shekels (\$20)**. The bus might be crowded with

soldiers and others. Don't take it personally when everyone begins to push and shove to get on the bus. Welcome to Israel! All the buses have luggage compartments on the side. If it is not open ask the driver and s/he will open it for you.

Via Tel Aviv. This is the fastest way to arrive, unless you want to spend some time in Jerusalem before dig. You can take the #476 bus from the airport to the Central Bus Station (about 45 min ride and about 12 shekels/\$3) or the train from Ben Gurion Airport and get off at the **HaHagana Station** (about 10 min ride and around 12 shekels/\$3) about 4-5 blocks walk from the Central Bus Station. Check with the airport information desk as well. Most Israelis speak English and are willing to help if you are uncertain where to disembark. From the Tel Aviv Central Bus Station, take the #800 bus (the #840 or #845 busses take longer) to Kiryat Shemona. The cost is about **60 shekels (around \$20)** and will take you about 3 hours. *See below for more information on what to do after you arrive in Kiryat Shemona.*

Via Jerusalem. Take the **Nesher** airport shuttle located outside the terminal when you exit. The ride is about **80 shekels (around \$28)**. If you are not staying the night (where you simply tell the driver where you want to go), ask to be left off at the **Jerusalem Central Bus Station** (also called the “**Egged Bus Station**”, the name of the official bus company). It is a 45-minute ride (depending on traffic and how hungry the driver is!). Allow yourself 10-15 minutes to get inside the bus station, as sometimes the security check line is long. Luggage might be screened. Take the #963 bus to **Kiryat Shemona**. This ride costs about **50 shekels (\$17)**. You can also take the #485 bus (see above) from Ben Gurion Airport to a point one block east of the Central Bus Station and then enter into the station to catch your bus for Kiryat Shemona.

Suggestion: Try to get to the correct bus stop inside the central bus station early, since the bus might be crowded with soldiers and others. Don't take it personally when everyone begins to push and shove to get on the bus. Welcome to Israel! All the buses have luggage compartments on the side. If it is not open, ask the driver, and s/he will open it for you.

By train: Trains run from Ben Gurion Airport to **Haifa** and **Acco**. Access to the trains is located to the left or right as you exit the arrival hall. Buy your ticket at the electronic kiosk and go down one level to the trains. It is best to get off in **Haifa** at the *Lev Hamifratz* – “Heart of the Bay” – railway station and then go to the nearby Central Bus Station (*Merkazit HaMifratz*) to take the Egged **500** bus to Kiryat Shemona. Right now, the train and central bus stations are nearby one another, but in 2018, the new Haifa Bay Central Station will house the bus and train stations in the same complex. There is another advantage to disembarking in Haifa – it is the beginning of the 500 line to Kiryat Shemona so you will get a seat since the bus fills up as it goes along its route. You will be able to place any luggage in the cargo hold below. If for any reason you miss the Haifa train station and end up at the end of the line in Acco, the 500 bus stops in Acco on its way to Kiryat Shemona, so you will be able to board here. It is just that the bus will probably be full. The train schedule is on the Israel Railroad Authority website (<https://www.rail.co.il>). Click on the “English” link. The train to **Haifa** is about 1.5 hours from Ben Gurion Airport and another 30 minutes to **Acco**. The #500 bus from the Haifa Central Bus station to Kiryat Shemona is about 2 hours and about 1.5 hours from Acco. The #500 bus from Haifa to Kiryat Shemona departs every half hour starting at 7:30 am and from 8:00 in Acco (see the Egged bus website, noted

above). When returning, simply reverse the procedure described above. Take note: the last train from Haifa to Ben Gurion Airport leaves at 2:30 pm on Fridays so plan ahead if your flight leaves on Friday evening or early Saturday morning. Anticipate paying around 80 shekels for the entire trip (train + bus) one-way.

Once in Kiryat Shemona. Upon arrival at the Central Bus Station in Kiryat Shemona there are a few options to get to the kibbutz. You can take a taxi. If you prefer the local bus, a website called www.bus.co.il has information concerning the bus lines and their schedules; some of these lines are run by the Egged company (and you can find them on the Egged website), while others are run by different companies (and you can find them on the www.bus.co.il site). Ask the dispatcher at the Kiryat Shemona bus station when you arrive and he will direct you to the bus stop to the kibbutz. Everyone that needs a lift is invited to call Nava at her phone number below and we will pick you up. (Most Israelis will let you use their phone if you do not have one with you.) If you can text us ahead of time about your estimated arrival time, we can plan our arrival for the time you get there. Wait for us opposite the bus station in front of the indoor shopping mall with a big “8” sign above the main entrance.

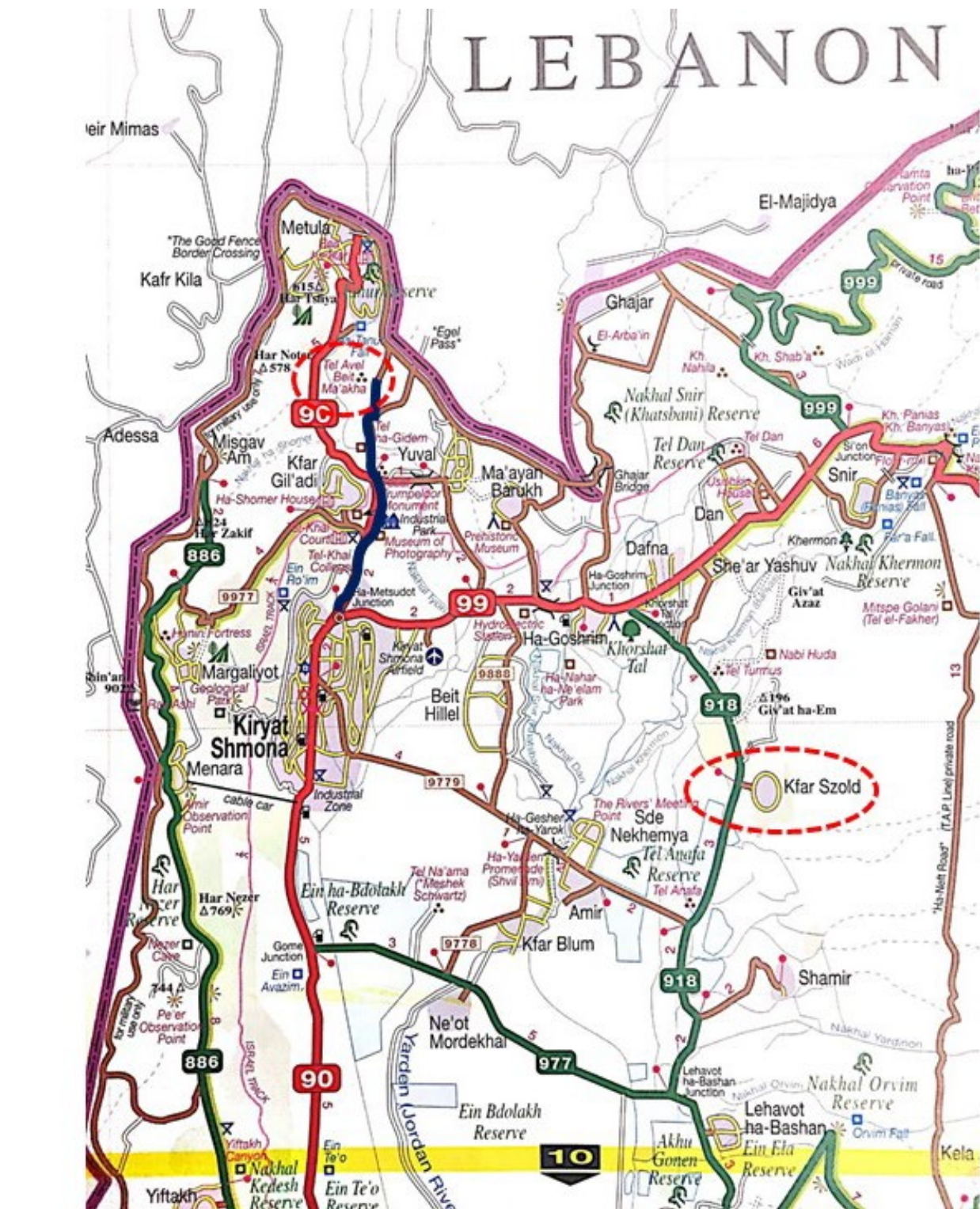
Egged bus website: www.egged.co.il

Another website with bus schedule information: www.bus.co.il

Israel Railway Authority: <https://www.rail.co.il>

Car Rental in Kiryat Shemona: If you want to rent a car while you are in Israel, particularly during the weekends, please contact one of the staff members who will help you do so. It is not uncommon for 3 or 4 people to chip in and rent a car together. You need to be 21 to drive and 24 to rent. Those from North America do not need an international driver's license since all North American licenses are valid in Israel. You can also pay for the rental and gas with your credit card. Please Google “car rental in Kiryat Shemona” to get up-to-date information about car rental companies since several have shut down since the Coronavirus pandemic.

Important: You must rent the car on Friday morning and return it only on Sunday, since on Saturday (the Sabbath), the rental places are closed.



Kibbutz Kefar Szold (Your home away from home)

The name of the kibbutz is **Kefar Szold (Kef-FAHR Sold)**. The kibbutz is located on Route 918 on the east side of the highway, south of Horshat Tal National Park.

Arrival: Once you have arrived at the main gate, tell the guard (if there is one) that you are with the archaeological dig and that you need to get to **Bakfar Country Lodgings** and then follow the signs. If you have a particularly heavy bag, you can ask to leave it with the guard at the gate and we will pick it up with the car a bit later. Please go to the main office where a representative of the kibbutz and of the expedition will be waiting. At this time, you will be assigned to your room. Please present proof of your health insurance to Bob or Nava. You will be given details about any outstanding payment, which can be taken care of on that day or within a few days of arrival. Please show your passport and entrance slip to the B&B office at this point; they will Xerox it and return it to you right away.

Computer and Internet Access: Free Wi-Fi is available on the kibbutz in the rooms, in the public areas, and in the dig office. When everyone is using it at peak time, it might get a bit patchy, but for the most part, it is reliable.

Staff telephone numbers

- Hebrew University office: (02) 588-2451 (landline)
- Nava Panitz-Cohen: 054-4403487 (mobile) panitz@mail.huji.ac.il
- Naama Yahalom-Mack: 050-832-2201 (mobile) naama.yahalom@mail.huji.ac.il
- “Bakfar” Country Lodging at Kibbutz Kefar Szold: 04-690-7176 (office landline) bakfar@lordan.co.il

*(02) is the Jerusalem area code when the number dialed in Israel. If you are in Jerusalem there is no need to dial the area code.

*If calling from outside Israel, you must prefix the number above with **972** (Israel country code) and subtract the 0 from the area code, e.g. Nava’s cell phone: 972-54-4403487; Naama’s cell phone: 972-50-8322201. If calling from the U.S., you must first dial the international access code: **011**-972-54-4403487.

Schedule: We leave the kibbutz at 4:30 a.m. (yes, you read that correctly!!) and begin working at 4:45 a.m. We leave the tell at 1:00 pm and go directly to the kibbutz dining room for lunch. At 4:00 in the afternoon, after you have had a chance to rest, team members are expected to assist with various tasks related to processing the finds, including pottery washing and marking, wet-sifting sediments, picking sifted sediments for grain, micro-fauna, etc., data-entry, and other assignments. Everyone is invited to participate in pottery sorting, which is mandatory for the academic credit students. Team members are also welcome to join the lectures two to three times a week, on topics related to biblical archaeology, geography, material culture, etc. We alternate between conducting these activities before or after dinner. A schedule will be distributed upon arrival. On the weekends, participants may relax on the kibbutz or choose to travel on their own (see above about car rental).

Daily schedule:

4:00 Wake-up and light breakfast in the rooms
4:35 Bus departs for the tell
5:00 Work begins
7:15 Tea break
9:00 Breakfast in the field
9:30 Work resumes
11:00 Juice/fruit break
12:45 Work ends
13:00 Departure from the tell
13:15 Lunch at the kibbutz dining room
14:00 Siesta (time to sleep, swim, relax, shop at the convenience store)
16:00 Pottery washing, pottery sorting, and other assignments/lecture (2-3 times a week)
19:15 Dinner at the kibbutz dining room
20:00 Pottery washing, pottery sorting, and other assignments/lecture (2-3 times a week)
22:00 Recommended bedtime

During the time we are out in the field, our office manager is busy organizing and processing the many finds. We welcome our team members to experience office work at least once during their stay and thus to get a different perspective on the workings of an archaeological dig. We ask you to coordinate this with your field supervisor one day before you plan to stay back in the office, so we know in advance who will be in the field the next day.

Work etiquette and safety concerns:

1. Little contributes more to the overall success of an excavation than mature people who maintain a good attitude towards their work and one another.
2. Please get up promptly in the morning and make sure that all your roommates are awake.
3. Be sensitive to the needs of others and respect their privacy.
4. No loud noise or talking after 21:00 to allow those who wish to go to bed to get their rest. We recommend that you not stay up later than 22:00 and take advantage of the afternoon nap times. Fatigue has a cumulative effect.
5. Wear safe clothing and shoes. Light-weight long-sleeve shirts and pants are best. Sturdy shoes are a necessity. No sandals in the field.
6. Leave the lodgings no later than 5 minutes before bus departure time, that is, no later than 4:40 a.m. Prompt arrival is a must. If you miss the bus it is a hassle to bring you out to the tell. If you wake up ill and decide to stay back, have one of your roommates tell us.
7. Upon arrival to the tell go directly to your assigned field. Assist with setting up the sun shades and removing work tools from the metal storage bins.
8. Don't waste time sitting around and talking to people. It is important to the progress of the dig that everyone maximize their time by going immediately to work. Talking is fine, but do it while excavating.
9. Make liberal use of sun cream (even though we work under shade cloths) and consider wearing sunglasses or prescription lenses that darken in the sun.

10. Check any equipment before you use it. Make sure that the pick and turia heads are snug and that there is no danger of the heads coming off. This could be a danger to you or to your dig partners.
11. NEVER THROW OR TOSS TOOLS under any circumstances. Digging equipment is sharp and can cause serious injury.
12. When lifting heavy objects, never do it alone. Get the help of co-workers or a supervisor. Be careful about body mechanics. Lift with your back straight. Place stress on the thighs. Not on the back.
13. Avoid placing bags on the ground. If possible, hang them on a tree or somewhere off the ground. Make sure all openings are zipped up or closed as scorpions can find their way into open packs and bags. Check your bags thoroughly at the end of the dig day to make sure no unwanted creatures have found their way inside.
14. We are a **No Smoking** dig. If you have to smoke, you will need to do so during break at a distance from the excavation area. Take care not to start a brush fire in the dry weeds.
15. No eating in the excavation area; snacks during tea and juice/fruit break are enjoyed in a shady area just outside the excavation area. Breakfast takes place in a specially allocated area under a beautiful 'Giving Tree' with shade and water. If you must have a little nosh during the dig hours, that's fine, but please step out of the square.
16. No unnecessary walking on balks or stepping into other peoples squares and work areas without permission.
17. At quitting time, everyone must stay in their field *until your supervisor dismisses you*. This will not take place until all the tools have been placed in the bins and the sun shades properly lowered.
18. We follow strict rules concerning alcohol. Many of us enjoy a relaxing glass of wine or refreshing beer now and then in the evenings or weekends, but it is important that you limit your alcohol intake, as it leads to dehydration, fatigue and other very serious side effects, including inappropriate behavior. Please respect this rule. Infringement of this stipulation may lead to expulsion from the excavation.
19. The excavation has zero tolerance for any kind of harassment from any person. If you experience harassment or someone makes you feel uncomfortable, inform one of the directors or a staff person.
20. There is no formalized dress code on our excavation (other than required dress for the tell for safety's sake). Yet, we ask that team members be considerate of those who find minimal dress offensive and to exercise discretion in their choice of non-modest clothing. We also ask that no one walk barefoot on the kibbutz grounds, as this can be dangerous.
21. Israel in the summer is hot! Drink plenty of water, use sunscreen, and wear your hat!!
22. Serious misconduct or irresponsibility that endangers or dishonors others may result in dismissal from the dig. The directors reserve the right to dismiss anyone from the dig. All dismissals require the agreement of all three dig directors and are final. In such a case, there can be no reimbursement of the remaining room and board costs.
23. If you don't feel well, report it to your supervisor and take a rest in the breakfast shade. If necessary, you will be evacuated for medical care. Drink, drink, and drink again. There are great chemical toilets (the "temples") for your use on the tell that usually stand upright if the wind hasn't blown them over!



Microarchaeological flotation on the kibbutz



Breakfast on the tell!



Pottery sorting at the kibbutz

PLANS FOR THIS SUMMER

We plan to continue to uncover the important Iron Age remains, including the citadel in Area B, the cultic and industrial quarter in Area A, and the storage facility in Area K, where a Hebrew inscription was found on one of the jars in the 2019 season. We will also excavate in “downtown Area A” in order to reach the level representing the Late Bronze Age.

CORONAVIRUS DISCLAIMER

Everything above is subject to change depending on the Coronavirus pandemic. The expedition cannot accept responsibility for canceled flights due to the pandemic or changes in protocol that the Israeli Ministry of Health might suddenly implement. The expedition cannot take responsibility for anyone who contracts COVID-19 while traveling since any pandemic entails a certain level of risk no matter what precautions that one takes. Under the current circumstances, we strongly advise you to purchase travel insurance with medical and trip cancellation coverage; however, check first with the insurance company about their COVID-19 policy. If you should become ill while abroad, you want to be sure that the company will cover you. Many reputable travel insurance companies are not honoring refunds on canceled flights unless one is actually ill with the Coronavirus.

FINAL NOTE: Everyone who joins us this summer should be aware that epidemiologists in the U.S. continue to warn that even with full vaccination and following all protocols, travel abroad still presents some risk since you might be exposed to variants not in the U.S. In theory, one or more of these strains might blunt the effectiveness of the vaccines. Current evidence indicates that the Pfizer, Moderna, and Johnson & Johnson vaccines are highly effective and provide sufficient protection, but a tiny number of “breakthrough” infections are known to occur.

Basic Hebrew and Arabic Phrases

English	Hebrew	Arabic
Hello	shah-loam	mahr <i>Hah</i> -bah
Goodbye	shah-loam	mah-ah-sah-lah-meh
Good morning	bo-care <i>tohv</i>	sah-baH al-khair
Thank you	toe-dah	shouk-rah
How are you?	mah-neesh-mah?	kee-fahk (to a man) kee-fik (to a woman)
Fine	b'-sed-dair	im-neeH (by a man) im-nee-Hah (by a woman)
My name is _____	sh'mee _____	iss-mee _____
Please	b'-vah-kah-shah	min <i>fahd</i> -lahk
Sorry; excuse me	s'lee-khah	af-wahn; pahr-doan (French)
Yes	ken	nah-ahm
No	low	Lah
Do you speak English?	ahn- <i>gleet</i> ?	in- <i>glee</i> -zee?
Toilet, W.C.	sher-roo-teem	too-wah-let
Where . . . ?	ey-foh . . . ?	wayne . . . ?
How much?	kah-mah?	ah-desh?
Water	mai-eem	mai
Leave me alone!!	ah-zohv oh-tee	yell-lah im-shee
Help!	haht-see-loo	sai-doo-nee
Police!	meesh-tah-rah	Bolice!
Taxi	moh-neat	Taxi

H An "h" accompanied with a short blast of air

kh Aspirated "h" as in German "Bach" or "Achtung"

Police: 100

Ambulance: 101

Fire: 102

US Embassy (Tel Aviv): (03) 519-7575

US Consulate (Jerusalem): (02) 628-2452 / 628-2231

NOTE: You do not need to dial the prefix shown in parenthesis if you calling from the same city.